



Model MQ1226+APC Shown

**KEY FEATURES:**

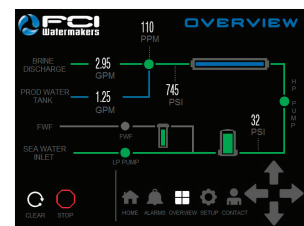
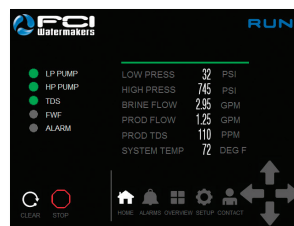
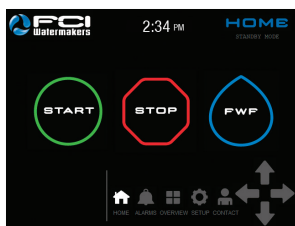
- 7" Marine Grade, Hi-Res Touch Screen
- Automatic Pressure Control (APC)
- Product Vessels with 316 SS Pressure Ports
- 40 sq. ft. Pre-filter with PVC Core, and Pressure Monitoring and Alarming
- TEFC Continuous-duty Washdown Rated Motors
- Efficient Feed Pump with Closed Impeller Design
- NEMA 4X Rated Electrical Enclosure
- Programmable Automatic Fresh Water Flush
- Non-proprietary Membranes
- Available in Framed and Modular Configurations

## STILL THE WORLD'S FINEST WATERMAKER.

The **Max-Q+** and **Max-Q+APC** are the latest evolution of the Max-Q product line. Our exclusive V4 control system utilizes a high resolution marine-grade 7-inch touch screen panel with an advanced intuitive interface. Operating and controlling a watermaker has never been easier. With the optional APC, Automated Pressure Control, making water is literally a touch away.

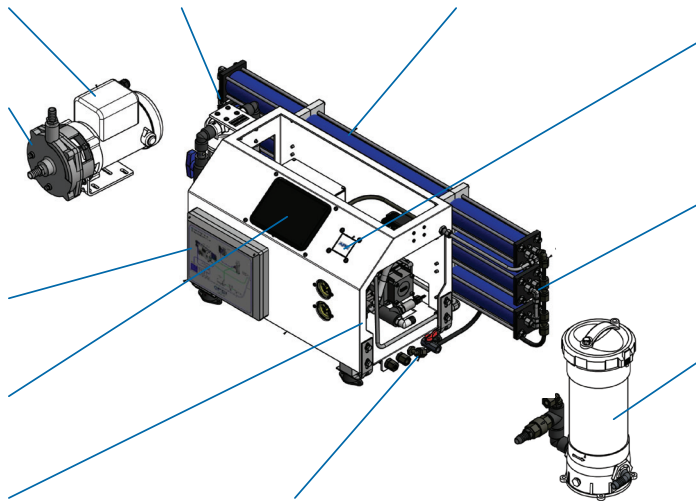
FCI has been manufacturing watermakers and water purification equipment for over three decades. We design and manufacture all of our equipment in-house for optimum quality control, and to ensure you are getting the most reliable watermaker on the market today. You have the comfort of knowing a company which has been in business for over 30 years, and specializing in only watermakers, is here for you.

**THE INDUSTRY'S MOST RELIABLE WATERMAKER PUTS COMPLETE AUTOMATION AT YOUR FINGERTIPS.** FCI's next generation controller and interface allows customization of your watermaker through intuitive advanced touch screen controls. Our monitors' higher heat tolerance and system design allows it to work in the harshest environments. FCI touch screen controllers can be installed with confidence, because they are Bridge Classified for marine use with Type Approval Certifications from: ABS, GL, Lloyd's Register EMEA, Det Norske Veritas, and Russian Maritime Register of Shipping.



**MAX-Q+APC SYSTEM FEATURES:**

- **MOTORS:** TEFC continuous-duty washdown rated motors with 316 SS shaft, and sealed maintenance-free bearings for long life applications.
- **LP FEED PUMP:** Closed impeller design offers 50% more pressure efficiency over standard pumps.
- **ELECTRICAL:** NEMA 4X rated enclosure.
- **HMI TOUCH SCREEN:** 7" High-resolution, Marine Grade and Bridge Certified.
- **OPEN FRAME DESIGN:** Allows easy visual inspection and access for maintenance.
- **FRESH WATER FLUSH:** Schedule automated flushes through the V4 Control.
- **MEMBRANES:** High Rejection non-proprietary membranes used to obtain the highest quality of product water.
- **AUTOMATED PRESSURE CONTROL (APC):** Auto-adjusts system pressure to feed water conditions.
- **PRODUCT VESSELS:** 316 SS product/pressure ports, and FDA/NSF-51 fittings used on the product water.
- **PRE-FILTER:** 40 sq. ft. of pleated filter with PVC core in addition to pressure monitoring and alarming.
- **CONNECTIONS:** Easily accessed to simplify installation along with a oil drain.



**DESIGN PARAMETERS**

Design Permeate Salinity:	< 500ppm
Salt Rejection (Chloride):	99.7%
Power:	2.29kW
Control Voltage:	24 VDC
Operation Pressure:	825 PSI/56 Kg/cm <sup>2</sup>

**POWER SUPPLY OPTIONS**

VAC/Phase/Hz:	110-120/1/50-60	Amperes:	27.6-28.6
	208-240/1/50-60		13.8-14.3
	208-240/3/60		9.6
	380/3/50		5.9
	440-480/3/60		4.8

**UTILITIES**

Inlet:	3/4" FNPT
Brine:	1/2" Tube
Product:	3/8" Tube
FWF:	1/2" Tube

MODEL	GPD/LPD	GPH/LPH	HP	KW	RECOVERY RATE %	WEIGHT LB/KG
MQ726+ / MQ726+APC	700/2649	29/110	2.5	2.29	12.0	195/88
MQ1226+ / MQ1226+APC	1275/4825	53/201	2.5	2.29	21.0	205/93
MQ1826+ / MQ1826+APC	1850/7000	77/292	2.5	2.29	31.0	215/98

NOTE: Ratings based on 77°F/25°C; 32,500 TDS Feed; at 800psi, 120/220 vac, 60 Hz.



FRAME WIDTH

FRAME ONLY	25.00 in.
WITH FILTER	31.05 in.
WITH MEMBRANES	46.80 in.



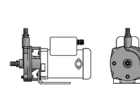
FRAME DEPTH

FRAME ONLY	15.30
WITH MEMBRANES	19.55



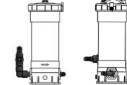
FRAME HEIGHT

H 17.10



LP PUMP

W	7.16
D	15.86
H	10.81



PRE-FILTER

W	11.10
D	9.60
H	19.00



Max-Q+ is compatible with the latest FCI Dockside Treatment Systems. DTS+ is an FCI innovation specifically designed to treat dock water for spot-free wash-downs and purified drinking water. It works in-line to preserve your seawater membranes while utilizing existing watermaker pumps and controls.



Model MQM1226+APC Shown

**KEY FEATURES:**

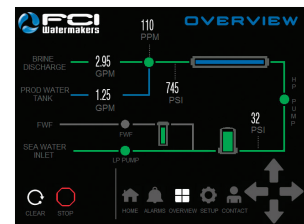
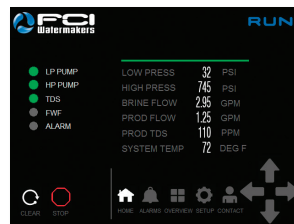
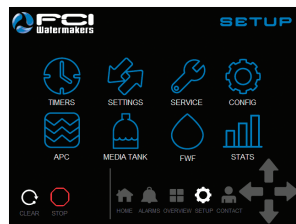
- 7" Marine Grade, Hi-Res Touch Screen
- Automatic Pressure Control (APC)
- Product Vessels with 316 SS Pressure Ports
- 40 sq. ft. Pre-filter with PVC Core, and Pressure Monitoring and Alarming
- TEFC Continuous-duty Washdown Rated Motors
- Efficient Feed Pump with Closed Impeller Design
- NEMA 4X Rated Electrical Enclosure
- Programmable Automatic Fresh Water Flush
- Non-proprietary Membranes
- Available in Framed and Modular Configurations

**STILL**  
**THE WORLD'S FINEST WATERMAKER.**

The **Max-Q+** and **Max-Q+APC** are the latest evolution of the Max-Q product line. The modular configuration is ideal when installation space is limited. Our exclusive V4 control system utilizes a high resolution marine-grade 7-inch touch screen panel with an advanced intuitive interface. Operating and controlling a watermaker has never been easier. With the optional APC, Automated Pressure Control, making water is literally a touch away.

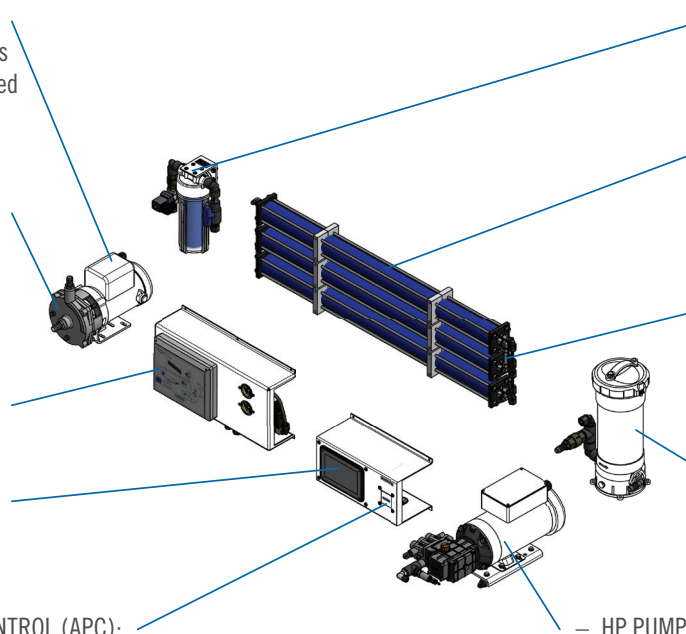
FCI has been manufacturing watermakers and water purification equipment for over three decades. We design and manufacture all of our equipment in-house for optimum quality control, and to ensure you are getting the most reliable watermaker on the market today. You have the comfort of knowing a company which has been in business for over 30 years, and specializing in only watermakers, is here for you.

**THE INDUSTRY'S MOST RELIABLE WATERMAKER PUTS COMPLETE AUTOMATION AT YOUR FINGERTIPS.** FCI's next generation controller and interface allows customization of your watermaker through intuitive advanced touch screen controls. Our monitors' higher heat tolerance and system design allows it to work in the harshest environments. FCI touch screen controllers can be installed with confidence, because they are Bridge Classified for marine use with Type Approval Certifications from: ABS, GL, Lloyd's Register EMEA, Det Norske Veritas, and Russian Maritime Register of Shipping.



**MAX-Q+APC SYSTEM FEATURES:**

- MOTORS: TEFC continuous-duty washdown rated motors with 316 SS shaft, and sealed maintenance-free bearings for long life applications.
- LP FEED PUMP: Closed impeller design offers 50% more pressure efficiency over standard pumps.
- ELECTRICAL: NEMA 4X rated enclosure.
- HMI TOUCH SCREEN: 7" High-resolution, Marine Grade and Bridge Certified.
- AUTOMATED PRESSURE CONTROL (APC): Auto-adjusts system pressure to feed water conditions.
- FRESH WATER FLUSH: Schedule automated flushes through the V4 Control.
- MEMBRANES: High Rejection non-proprietary membranes used to obtain the highest quality of product water.
- PRODUCT VESSELS: 316 SS product/pressure ports, and FDA/NSF-51 fittings used on the product water.
- PRE-FILTER: 40 sq. ft. of pleated filter with PVC core in addition to pressure monitoring and alarming.
- HP PUMP: 316 SS close-coupled to a epoxy coated, washdown duty motor. Shock mounts reduce noise and vibration for quiet operation.



**DESIGN PARAMETERS**

Design Permeate Salinity:	< 500ppm
Salt Rejection (Chloride):	99.7%
Power:	2.29kW
Control Voltage:	24 VDC
Operation Pressure:	825 PSI/56 Kg/cm <sup>2</sup>

**POWER SUPPLY OPTIONS**

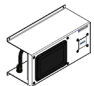

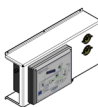

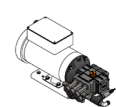

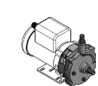
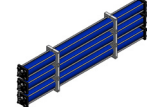
VAC/Phase/Hz:	110-120/1/50-60	Amperes:	27.6-28.6
	208-240/1/50-60		13.8-14.3
	208-240/3/60		9.6
	380/3/50		5.9
	440-480/3/60		4.8

**UTILITIES**

Inlet:	3/4" FNPT
Brine:	1/2" Tube
Product:	3/8" Tube
FWF:	1/2" Tube

MODEL	GPD/LPD	GPH/LPH	HP	KW	RECOVERY RATE %	WEIGHT LB/KG
MQM726+ / MQM726+APC	700/2649	29/110	2.5	2.29	12.0	185/84
MQM1226+ / MQM1226+APC	1275/4825	53/201	2.5	2.29	21.0	200/91
MQM1826+ / MQM1826+APC	1850/7000	77/292	2.5	2.29	31.0	205/93

NOTE: Ratings based on 77°F/25°C; 32,500 TDS Feed; at 800psi, 120/220 vac, 60 Hz.

							
APC CONTROL PANEL	CONTROL PANEL	FLOW PANEL	FRESH WATER FLUSH	HP PUMP	PRE-FILTER	LP PUMP	PRESSURE VESSELS
w 15.00 in. d 6.40 in. h 8.40 in.	w 15.00 d 7.90 h 8.40	w 21.50 d 6.95 h 12.10	w 9.10 d 6.10 h 12.25	w 9.65 d 24.50 h 10.65	w 11.10 d 9.60 h 19.00	w 7.16 d 15.86 h 10.81	w 46.90 d 4.00 h 12.45



Max-Q+ is compatible with the latest FCI Dockside Treatment Systems. DTS+ is an FCI innovation specifically designed to treat dock water for spot-free wash-downs and purified drinking water. It works in-line to preserve your seawater membranes while utilizing existing watermaker pumps and controls.